

Flexi-Lever Quick Start Guide

Thank you for purchasing the TS Controllers USB Flexi-Lever Controller. This quick start guide will help get you up and running straight away. Please read the instructions carefully.

Hints and tips

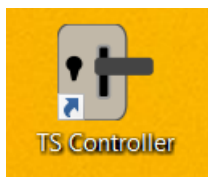
- Its fine to leave the controller plugged in when the computer is turned off.
- The software alerts you when new updates are available (Internet connection required).
- Please report any bugs, suggestions or improvements.
- It is recommended to keep hold of the packaging incase there are any issues.
- The pacakging contains a spare ball bearing incase one falls out and gets lost.

Lets get started!

To get started, download the software installer from:

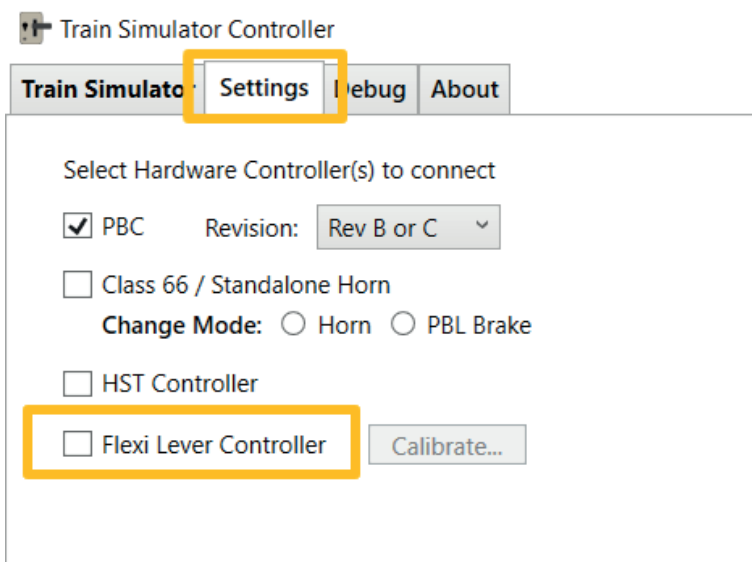
tinyurl.com/tspbc2021

Simply run the installer, and when finished, plug in the Controller into a USB port. Click the desktop icon to run the software:

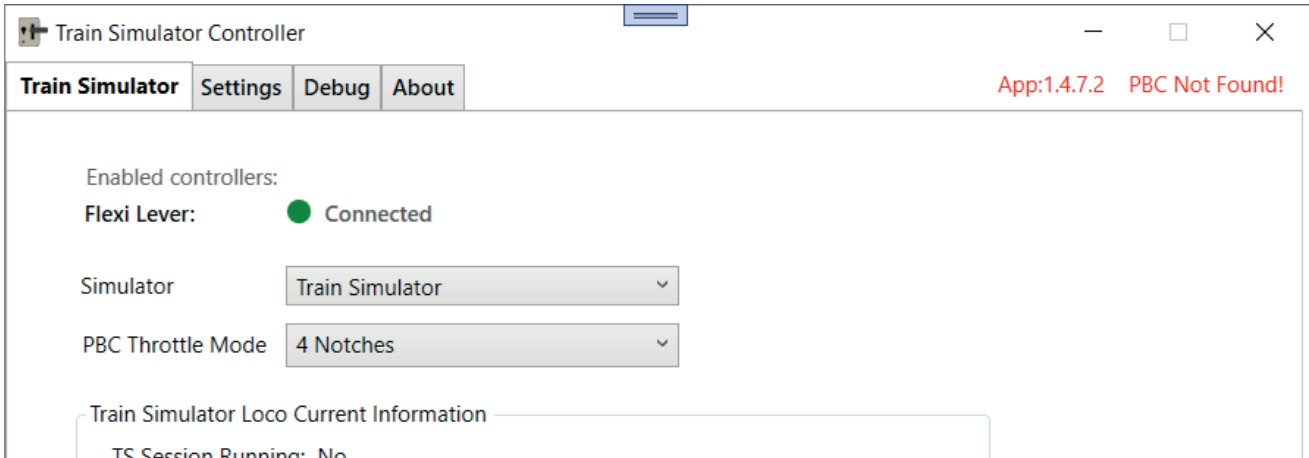


By default, the software will open up and attempt to connect to the PBC controller. To connect to the Flexi-Lever instead/or additionally, go into the settings tab, and tick the 'Flex-Lever tick box.

After ticking the box, and the when the controller has connected for the first time, the calibration window will pop-up. Follow the instructions to calibrate the controller.



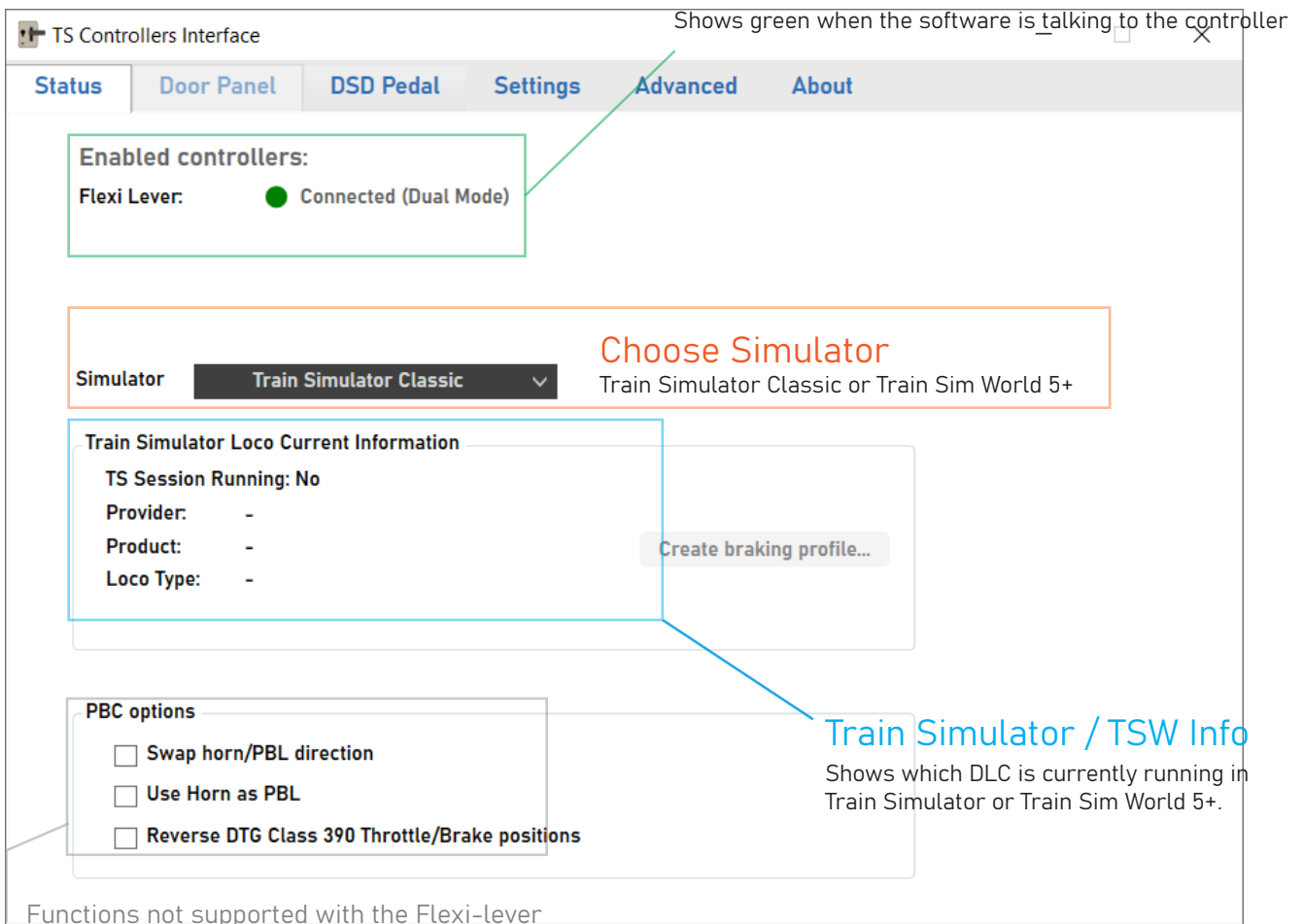
When the connection has been made (usually after a few seconds) the software will show a connected status:



You are now ready to play!

Controller Software overview

Connection status



Troubleshooting / Further information

For further information, or if you are experiencing issues, see the troubleshooting guide at:
www.tscontrollers.com/support