

66 Panel Quick Start Guide

Thank you for purchasing the TS Controllers Class 66 Style Panel Controller. This quick start guide will help get you up and running straight away. Please read the instructions carefully.

Hints and tips

- Its fine to leave the controller plugged in when the computer is turned off.
- The software alerts you when new updates are available (Internet connection required).
- Please report any bugs, suggestions or improvements.
- It is recommended to keep hold of the packaging incase there are any issues.

Lets get started!

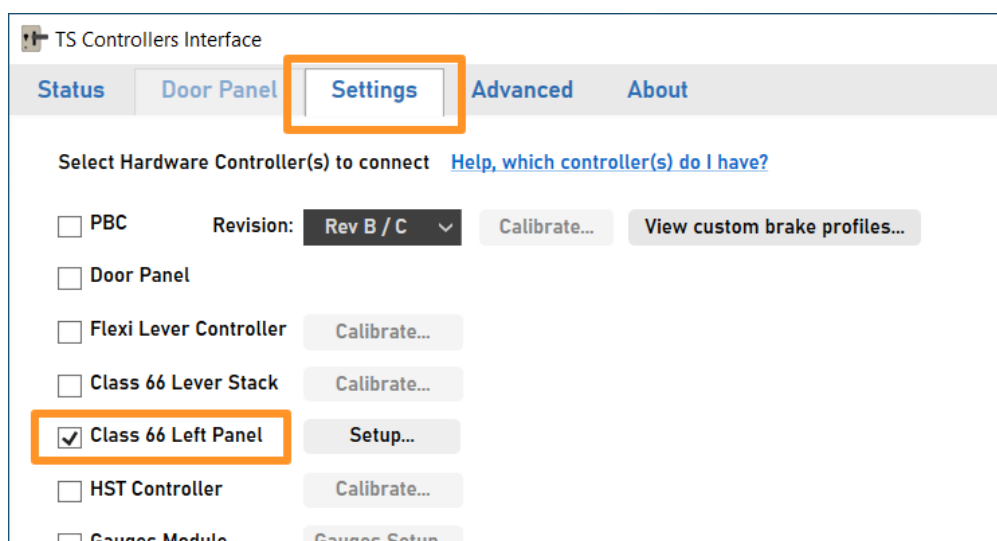
To get started, download the software installer from the below address. Alternatively, visit tscontrollers.com/support

`tinyurl.com/tspbc2021`

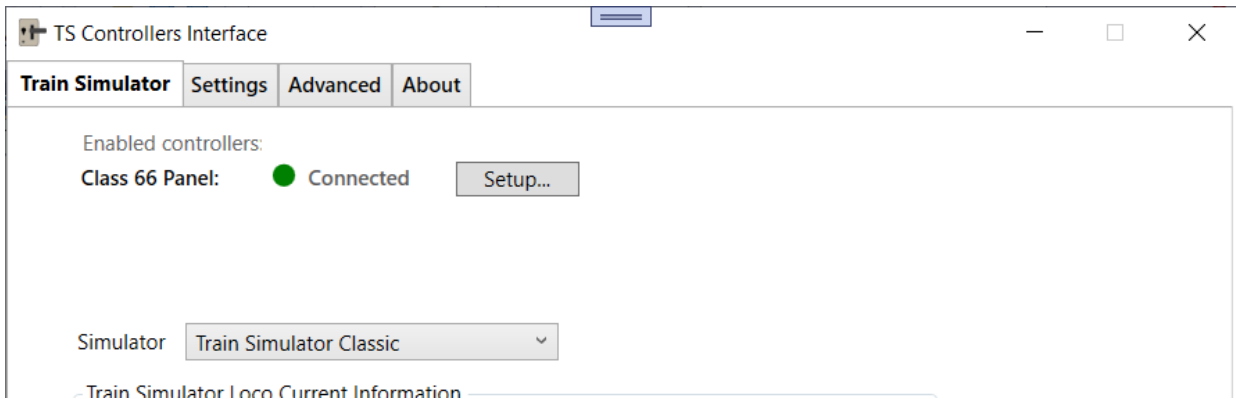
Simply run the installer, and when finished, plug in the Controller into a USB port. Click the desktop icon to run the software:



If this is the first time you have used the software, it will first ask to select which controllers you have. Tick the 'Class 66 Left Panel' tickbox. Alternatively, go into the settings tab, and tick the 'Class 66 Left Panel' tick box.



When the connection has been made (usually after a few seconds) the software will show a connected status in the main tab:



You are now ready to play!

To configure the controller, click the **Setup...** button next to the **Connected** icon . This will open a window where you can change the functions of each control, and save and recall presets.

Controller Software overview

Connection status
Shows green when the software is talking to the controller

Use this to switch between Train Simulator Classic and Train Sim World

Train Simulator Classic Info
Shows which DLC is currently running in Train Simulator.

Functions not supported with the 66 Panel

Troubleshooting / Further information

For further information, or if you are experiencing issues, visit:

tscontrollers.com/support